



Tackling fuel poverty in Bristol and the West of England

Presentation to Fuel Poverty Research Network
16 May 2018

Simon Roberts OBE

Chief Executive, Centre for Sustainable Energy

@cse_bristol



Outline

- A bit of history...
- Key drivers: RIIO-ED1 SECV, NICE NG6, PRS MEES
- Key challenges: Funding, Integration, Teeth, 'Smart'
- Towards 'No one suffers a cold home' as a city and regional target



centre for
sustainable
energy

1980s



@cse_bristol



centre for
sustainable
energy

1988

BRISTOL ENERGY CENTRE
PROOF OF EVIDENCE
BRENDA MARY BOARDMAN

1. I am an Independent Energy Consultant and have specialised in the energy needs of low income householders in Britain for six years. I obtained the degree of Doctor of Philosophy from the Science Policy Research Unit of the University of Sussex in 1988 with a thesis entitled "Economic, Social and Technical Considerations for Fuel Poverty Policy". In a voluntary capacity, I chair the National Right to Fuel Campaign's Steering Committee, sit on the Council of the Energy Conservation and Solar Centre and serve on the National Federation of Housing Association's Energy Conservation and Fuel Poverty Working Party.

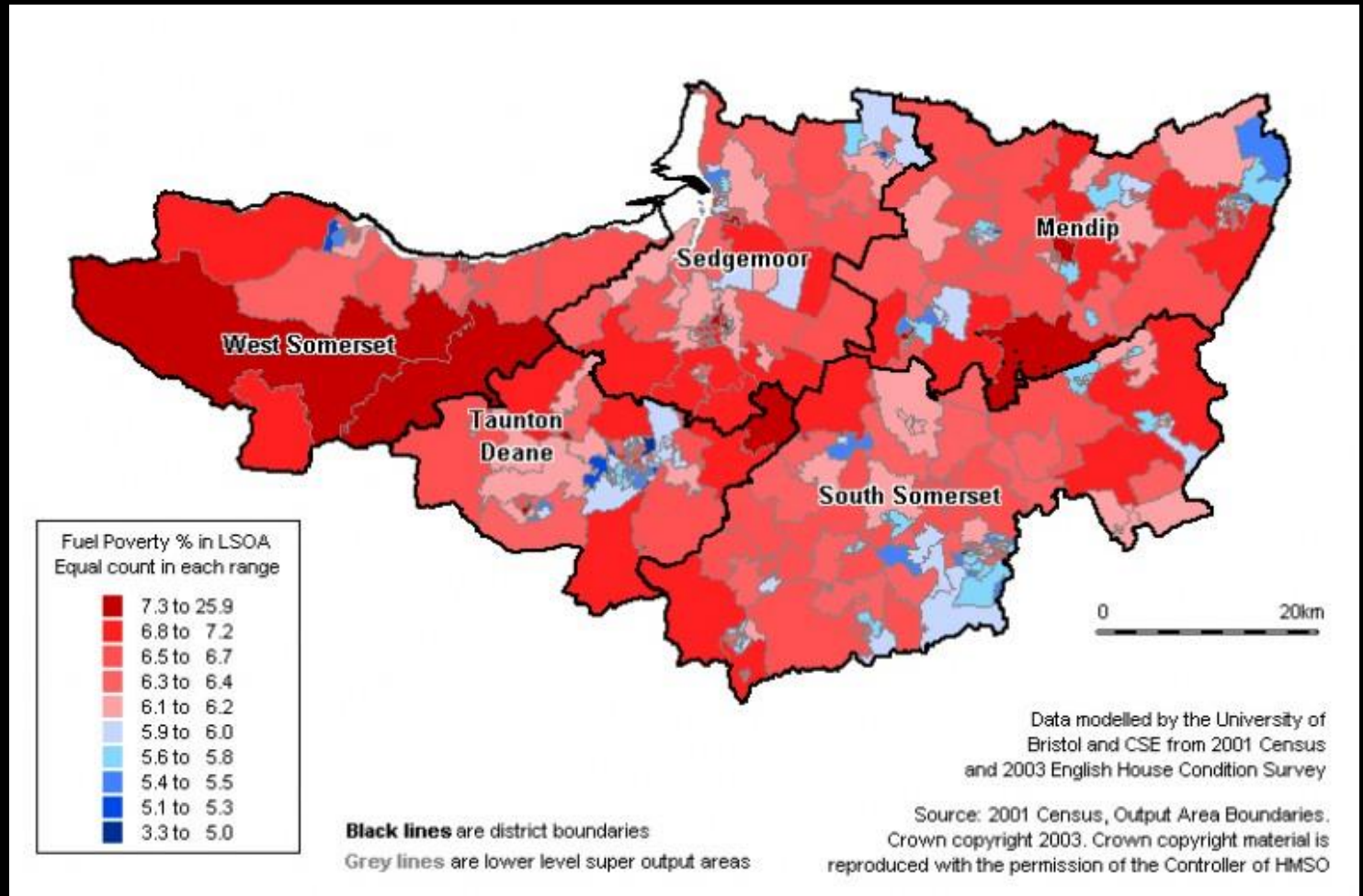
2. Bristol Energy Centre is primarily concerned about the impact that the construction of a PWR at Hinkley Point would have on domestic consumers, particularly low income families. Our main fear is that it will result in an unnecessary increase in the cost of electricity for those least able to bear it. Investment in domestic energy efficiency measures, on the other hand, will improve the living conditions of those households whilst reducing the

@cse_bristol



centre for
sustainable
energy

2003

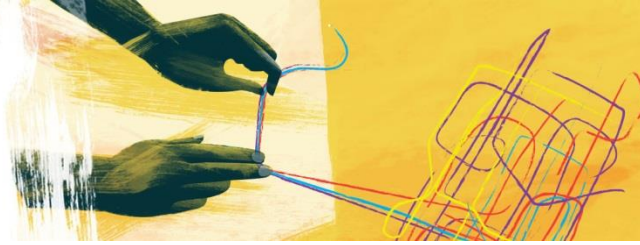


@cse_bristol



Key drivers for local action

- RIIO-ED1 SECV incentive
 - WPD more than 20 times better than SSEN in reach and impact
- NICE guidance on health impacts of cold homes
 - Bristol 'Fuel Poverty' chapter in its latest JSNA
- Private Rented Sector Minimum Energy Efficiency Standards
 - Partnership of CSE, Bristol CC, Shelter, awaiting BEIS funding
- Bristol Mayor's priority to tackle inequality in the city
 - New partnership, TEA, WHAM, BCEF grants, Bristol Energy tariff



Key challenges to local action

- **Funding** (or lack of it) for measures and failure of ‘total budget’ approach to preventative spend
- **Integration** with health sector, between utilities, across region, for true partnership (cf ‘commissioner – contractor’ model)
- **Teeth** (i.e. powers and resources) to enforce/enable PRS MEES or push for better deal for vulnerable customers
- **‘Smart’**: can we make a reality of the widely adopted principle of *‘no one gets left behind’* as charging regimes change, new services emerge, and system costs and benefits get redistributed?

